

**TTR Antibody (Center)**  
**Purified Rabbit Polyclonal Antibody (Pab)**  
**Catalog # AP6698C****Specification**

---

**TTR Antibody (Center) - Product Information**

Application	FC, IHC-P, WB,E
Primary Accession	<a href="#">P02766</a>
Other Accession	<a href="#">O46375</a>
Reactivity	Human
Predicted	Bovine
Host	Rabbit
Clonality	Polyclonal
Isotype	Rabbit IgG
Calculated MW	15887
Antigen Region	47-74

**TTR Antibody (Center) - Additional Information****Gene ID** 7276**Other Names**

Transthyretin, ATTR, Prealbumin, TBPA, TTR, PALB

**Target/Specificity**

This TTR antibody is generated from rabbits immunized with a KLH conjugated synthetic peptide between 47-74 amino acids from the Central region of human TTR.

**Dilution**

FC~~1:10~50

IHC-P~~1:10~50

WB~~1:1000

E~~Use at an assay dependent concentration.

**Format**

Purified polyclonal antibody supplied in PBS with 0.09% (W/V) sodium azide. This antibody is prepared by Saturated Ammonium Sulfate (SAS) precipitation followed by dialysis against PBS.

**Storage**

Maintain refrigerated at 2-8°C for up to 2 weeks. For long term storage store at -20°C in small aliquots to prevent freeze-thaw cycles.

**Precautions**

TTR Antibody (Center) is for research use only and not for use in diagnostic or therapeutic procedures.

**TTR Antibody (Center) - Protein Information**

**Name** TTR

**Synonyms** PALB

**Function** Thyroid hormone-binding protein. Probably transports thyroxine from the bloodstream to the brain.

**Cellular Location**  
Secreted. Cytoplasm.

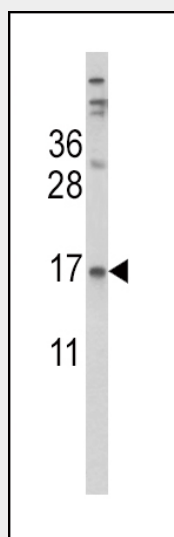
**Tissue Location**  
Detected in serum and cerebrospinal fluid (at protein level). Highly expressed in choroid plexus epithelial cells Detected in retina pigment epithelium and liver

### TTR Antibody (Center) - Protocols

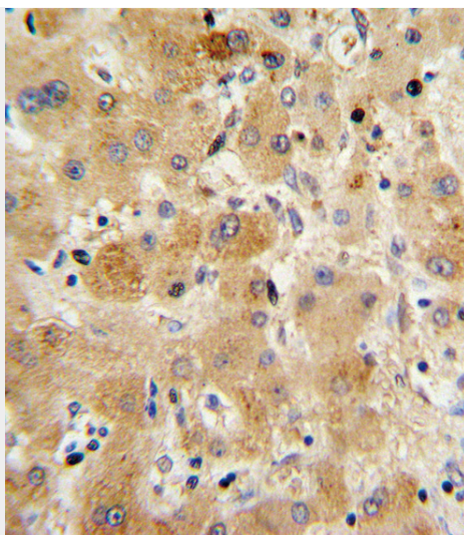
Provided below are standard protocols that you may find useful for product applications.

- [Western Blot](#)
- [Blocking Peptides](#)
- [Dot Blot](#)
- [Immunohistochemistry](#)
- [Immunofluorescence](#)
- [Immunoprecipitation](#)
- [Flow Cytometry](#)
- [Cell Culture](#)

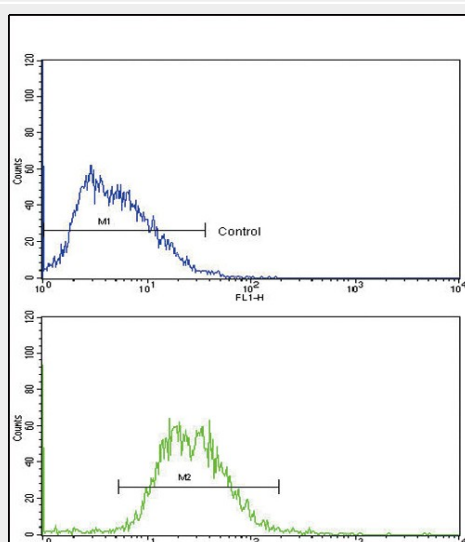
### TTR Antibody (Center) - Images



Western blot analysis of TTR Antibody (Center) (Cat. #AP6698c) in HepG2 cell line lysates (35ug/lane). TTR (arrow) was detected using the purified Pab.



Formalin-fixed and paraffin-embedded human hepatocarcinoma with TTR Antibody (Center), which was peroxidase-conjugated to the secondary antibody, followed by DAB staining. This data demonstrates the use of this antibody for immunohistochemistry; clinical relevance has not been evaluated.



TTR Antibody (Center) (Cat.#AP6698c) flow cytometry analysis of HepG2 cells (bottom histogram) compared to a negative control cell (top histogram). FITC-conjugated goat-anti-rabbit secondary antibodies were used for the analysis.

### TTR Antibody (Center) - Background

Transthyretin, one of the three prealbumins including alpha-1-antitrypsin, transthyretin and orosomucoid. Transthyretin is a carrier protein; it transports thyroid hormones in the plasma and cerebrospinal fluid, and also transports retinol (vitamin A) in the plasma. The protein consists of a tetramer of identical subunits. More than 80 different mutations in this gene have been reported; most mutations are related to amyloid deposition, affecting predominantly peripheral nerve and/or the heart, and a small portion of the gene mutations is non-amyloidogenic. The diseases caused by mutations include amyloidotic polyneuropathy, euthyroid hyperthyroxinaemia, amyloidotic vitreous opacities, cardiomyopathy, oculoleptomeningeal amyloidosis, meningocerebrovascular amyloidosis, carpal tunnel syndrome, etc.

### TTR Antibody (Center) - References

Lee, K.W., Biochem. Biophys. Res. Commun. 388 (2), 256-260 (2009)